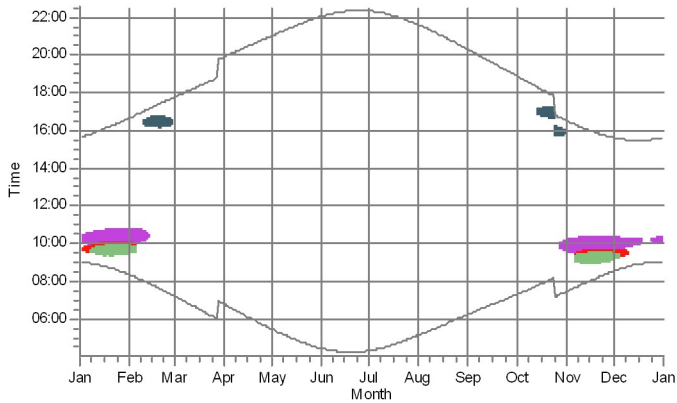


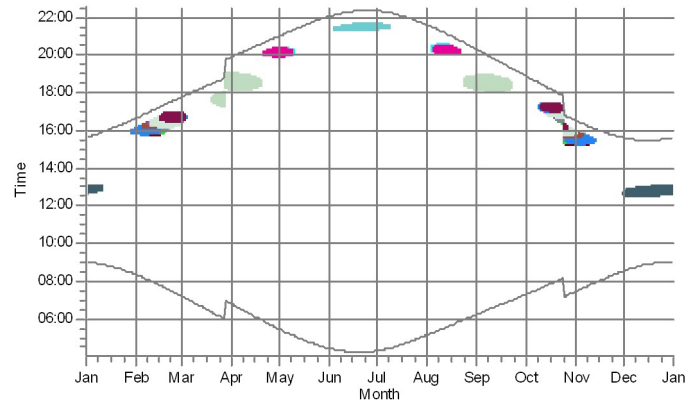
SHADOW - Calendar per WTG, graphical

Calculation: Flickering_Valka_Nordex163

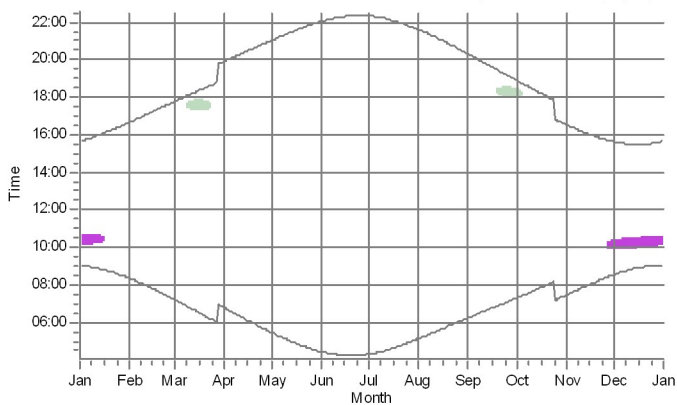
1: NORDEX N163/6.X 7000 163.0 !O! hub: 164.0 m (TOT: 245.5 m) (37)



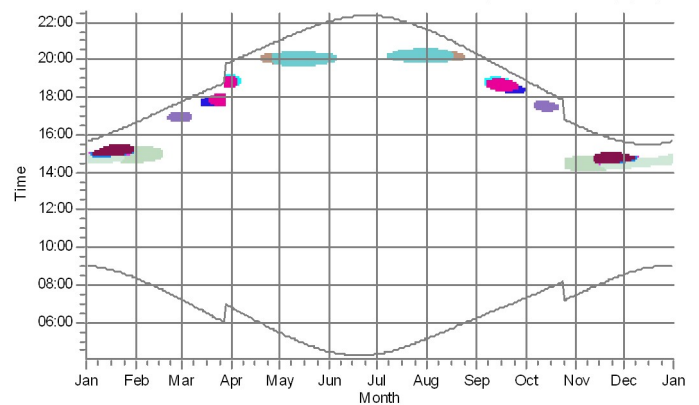
2: NORDEX N163/6.X 7000 163.0 IO! hub: 164.0 m (TOT: 245.5 m) (36)



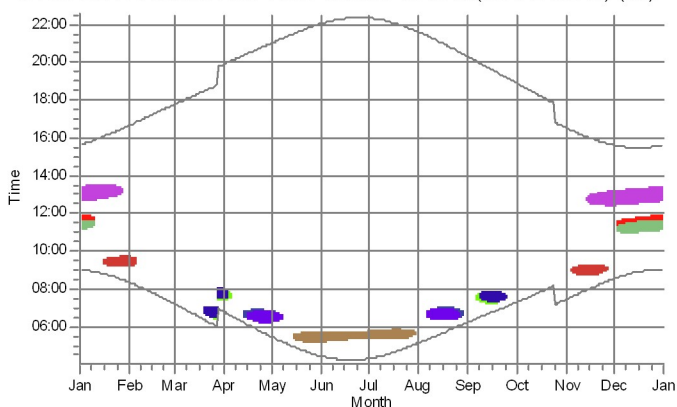
3: NORDEX N163/6.X 7000 163.0 !O! hub: 164.0 m (TOT: 245.5 m) (33)



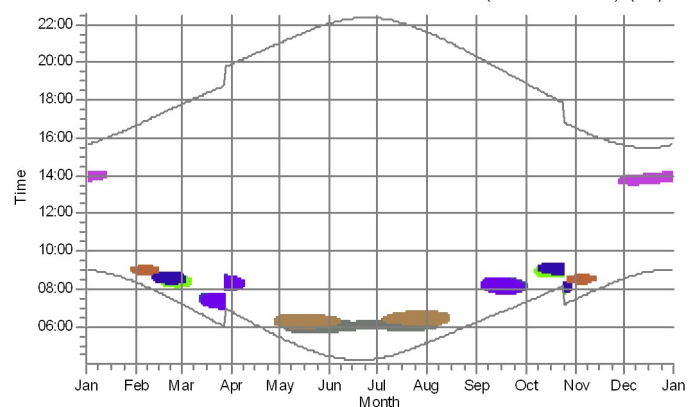
4: NORDEX N163/6.X 7000 163.0 Ю! hub: 164.0 m (TOT: 245.5 m) (41)



5: NORDEX N163/6.X 7000 163.0 !O! hub: 164.0 m (TOT: 245.5 m) (31)



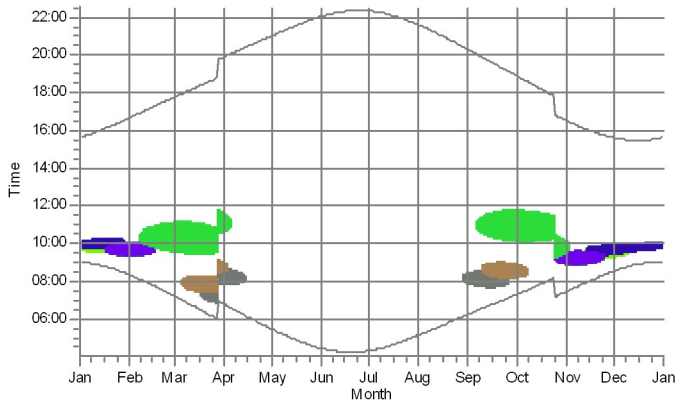
6: NORDEX N163/6.X 7000 163.0 IO! hub: 164.0 m (TOT: 245.5 m) (29)



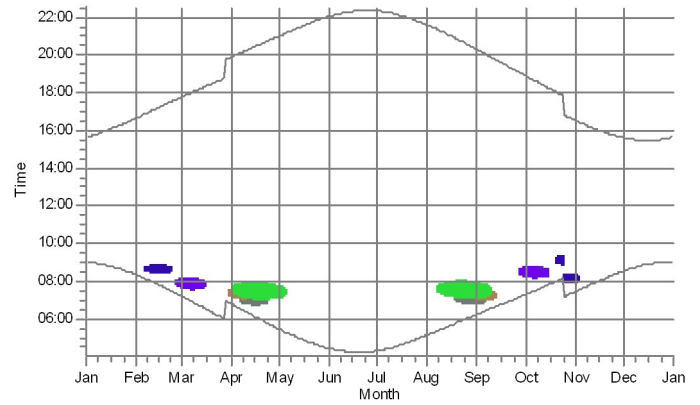
SHADOW - Calendar per WTG, graphical

Calculation: Flickering_Valka_Nordex163

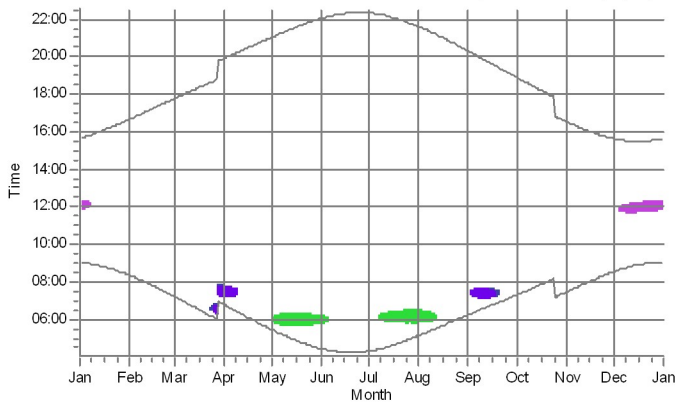
7: NORDEX N163/6.X 7000 163.0 !O! hub: 164.0 m (TOT: 245.5 m) (40)



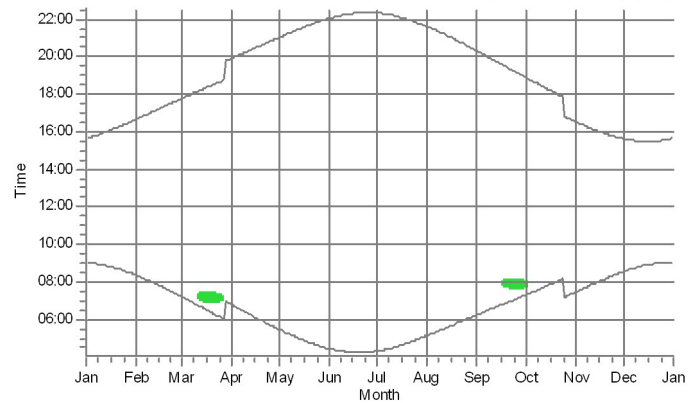
8: NORDEX N163/6.X 7000 163.0 !O! hub: 164.0 m (TOT: 245.5 m) (38)



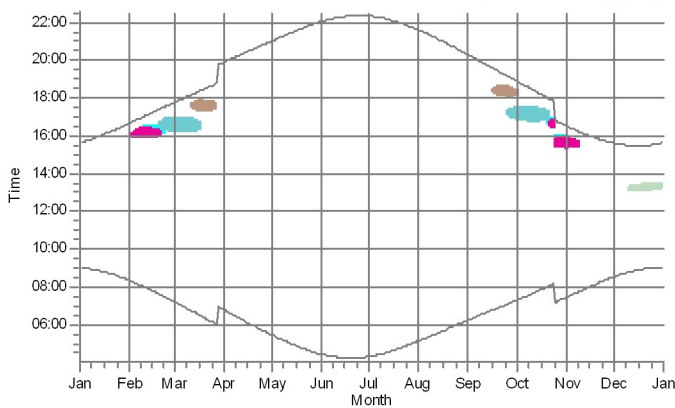
9: NORDEX N163/6.X 7000 163.0 !O! hub: 164.0 m (TOT: 245.5 m) (30)



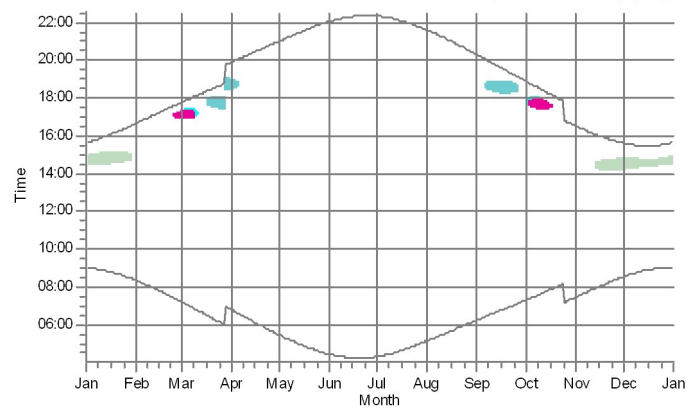
10: NORDEX N163/6.X 7000 163.0 !O! hub: 164.0 m (TOT: 245.5 m) (32)



11: NORDEX N163/6.X 7000 163.0 !O! hub: 164.0 m (TOT: 245.5 m) (39)



12: NORDEX N163/6.X 7000 163.0 !O! hub: 164.0 m (TOT: 245.5 m) (42)



Legend:
■ Shadow frequency: 100% (100% of the total shadow frequency)
■ Shadow frequency: 50% (50% of the total shadow frequency)
■ Shadow frequency: 25% (25% of the total shadow frequency)
■ Shadow frequency: 10% (10% of the total shadow frequency)
■ Shadow frequency: 5% (5% of the total shadow frequency)
■ Shadow frequency: 2% (2% of the total shadow frequency)
■ Shadow frequency: 1% (1% of the total shadow frequency)
■ Shadow frequency: 0% (0% of the total shadow frequency)

SHADOW - Calendar per WTG, graphical

Calculation: Flickering_Valka_Nordex163

